



# The AENSŌ

When the mind is free...

Aensō is a alternation of the Japanese word ensō - circle, which symbolizes absolute enlightenment, strength, elegance, the universe. The Aensō is hand-drawn in one uninhibited brush-stroke to express a moment when the mind is free and is characterised by a minimalism born of Japanese aesthetics.

It is exactly what we have created with the Aensō line. It is created with a minimal design, that embodies esthetics and symmetry, while the hand-drawn circle stands in direct contrast to that. The bottles and labels exhibit elegance and cleanliness.

## The circles

Each product features a unique circle. None matches the other. An artist has created the drawings especially for the brand. Each version of the circle was hand-drawn with original Japanese ink and brush, then scanned, vector traced and adjusted.

There is hundreds of individual, unique circles ready to be used for the Aensō product line.







## Manufacturing & development

How it's made

All Aensō products are strictly engineered in-house by our chemical specialists. There is no single product in the line that would be bought from a third party. We developed the formulations from scratch over the course of three years. Many of them are unconventional in their nature and outperform expectations, because right from the start we focused on exceptional performance and product quality.

While a large part of the laboratory development was done in our labs in Japan, the manufacturing process is based in Central Europe. We have chosen this region for the local availability of high quality raw materials. For the Aensō manufacturing we only use the highest quality chemicals, sourced from leading European manufacturers like BASF or Evonik.

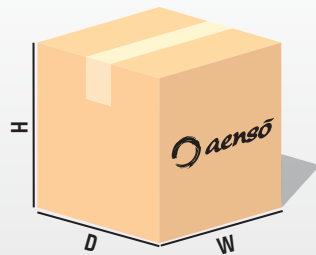
By using materials of renowned manufacturers, we also ensure compliance with strict regulations around the world.

# Packaging

## The Aensō custom boxes

All products of the Aensō range come in custom-made cardboard boxes.

The outer box is made out of five layers (5 VL) while the inner grid that separates the bottles is made from three layer cardboard (3 VL). The box comes with printed Aensō logotypes on the sides. The boxes allow safe shipping of products either on palettes or stand-alone, providing enough stability for dropped boxes and other damages occurring in transport. Each box can support over 90 Kg if fully occupied with bottles.

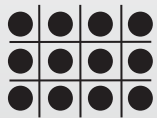


### Box dimensions

12x 500 ml  
25x 250 ml

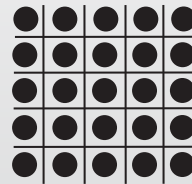
253 x 265 x 205 mm (H x W x D)

253 x 265 x 205 mm (H x W x D)



### Box content 500ml

3 x 4 500ml bottles



### Box content 500ml

3 x 4 500ml bottles



## Packaging

### The Aensō bottles

The clean and minimal design of the bottles completes the overall idea that is the driving force behind the development of the Aensō line. The strength, the elegance, the feeling when everything comes together just perfectly.

Unlike any other product on the market, the Aensō bottles set themselves apart by the slick, yet exceptionally functional design, which equips them with stability and safety in transport and elegance and recognizability in sales.

#### Bottle parameters

Material:	natural HDPE (High Density Poly Ethylene - modified Marlex)			
Closure type:	28/410 GPI/SPI finish, threaded neck (1.5 turns)			
Label:	specially developed, matte laminated polyurethane film			
Dimensions:	Bottle (incl. neck):	Ø = 60mm	h = 206mm	W = 38,28g
	Cap:	Ø = 30mm	h = 20mm	W = 2,67g
	Overcap:	Ø = 60mm	h = 56mm	W = 16,33g
<hr/>				
	Total:	Ø = 60mm	h = 230mm	W = 57,28g



## Primeuse

### Pre-Wash Degreaser

Primeuse is a concentrated degreaser, used on heavily soiled surfaces before washing. It helps to loosen deposits of road grime, salt and grease. Primeuse is used on the exterior and engine bays of motor vehicles.

Spray on soiled surface and leave to react. If required, agitate with a soft brush. Wash away with pressure washer. This product can be added to Aensō snowfoams and Aensō One shampoo to boost their performance. Do not leave to dry on the surface!



Find out more about this product by following the hyperlink in the QR code or visit [www.aensocarcare.com/product-primeuse.html](http://www.aensocarcare.com/product-primeuse.html)



## Product information

Available volumes: 500ml / 16,90 US fluid ounce  
5000ml / 169,07 US fluid ounce

EAN Code: 8585053600015  
Product code: 00015  
Packaging material: HDPE

## Logistics information



### Box

Content: 12 bottles  
Dimensions: 262mm x 195mm x 245mm  
Weight: 7,10 Kg / 15.66 pound per box



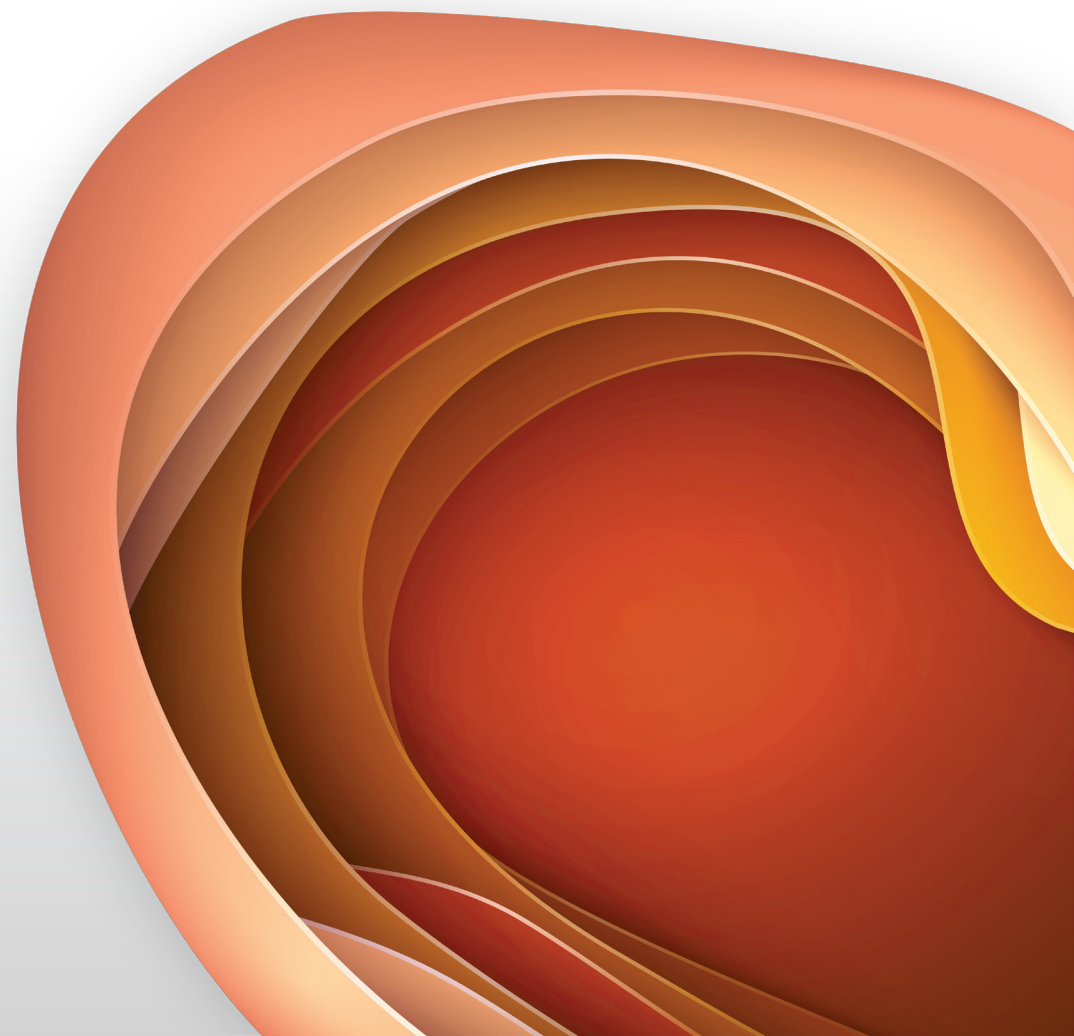
### Pallette segment

Content: 12 boxes / 144 bottles  
Height: 245mm (EUR Palette 1200mm x 800mm)  
Weight: 85,20 Kg / 187,87 pound



### Full pallette

Content: 5 segments / 60 boxes / 720 bottles  
Height: 1225mm (EUR Palette 1200mm x 800mm)  
Weight: 426,00 Kg / 939,33 pound





## Core

Interior detailer

Core is a next generation interior detailer with cleaning abilities, that can be used to clean and protect the interior of motor vehicles in one step. Core will safely remove dust and dirt and introduce a state-of-the-art anti static effect to the surface. It will mildly enhance the color of interior plastics, leaving a smear free, satin finish behind. Core can safely be applied to displays and touchscreens.

Spray on a microfiber towel and wipe the surface until clean and smear free. If required, use another microfiber towel to wipe excess product away.



Find out more about this product by following the hyperlink in the QR code or visit [www.aensocarcare.com/product-primeuse.html](http://www.aensocarcare.com/product-primeuse.html)



## Technical information

Available volumes: 500ml / 16,90 US fluid ounce  
5000ml / 169,07 US fluid ounce

EAN Code: 8585053600022  
Product code: 00022  
Packaging material: HDPE

## Logistics information



### Box

Content: 12 bottles  
Dimensions: 262mm x 195mm x 245mm  
Weight: 6,96 Kg / 15.35 pound per box



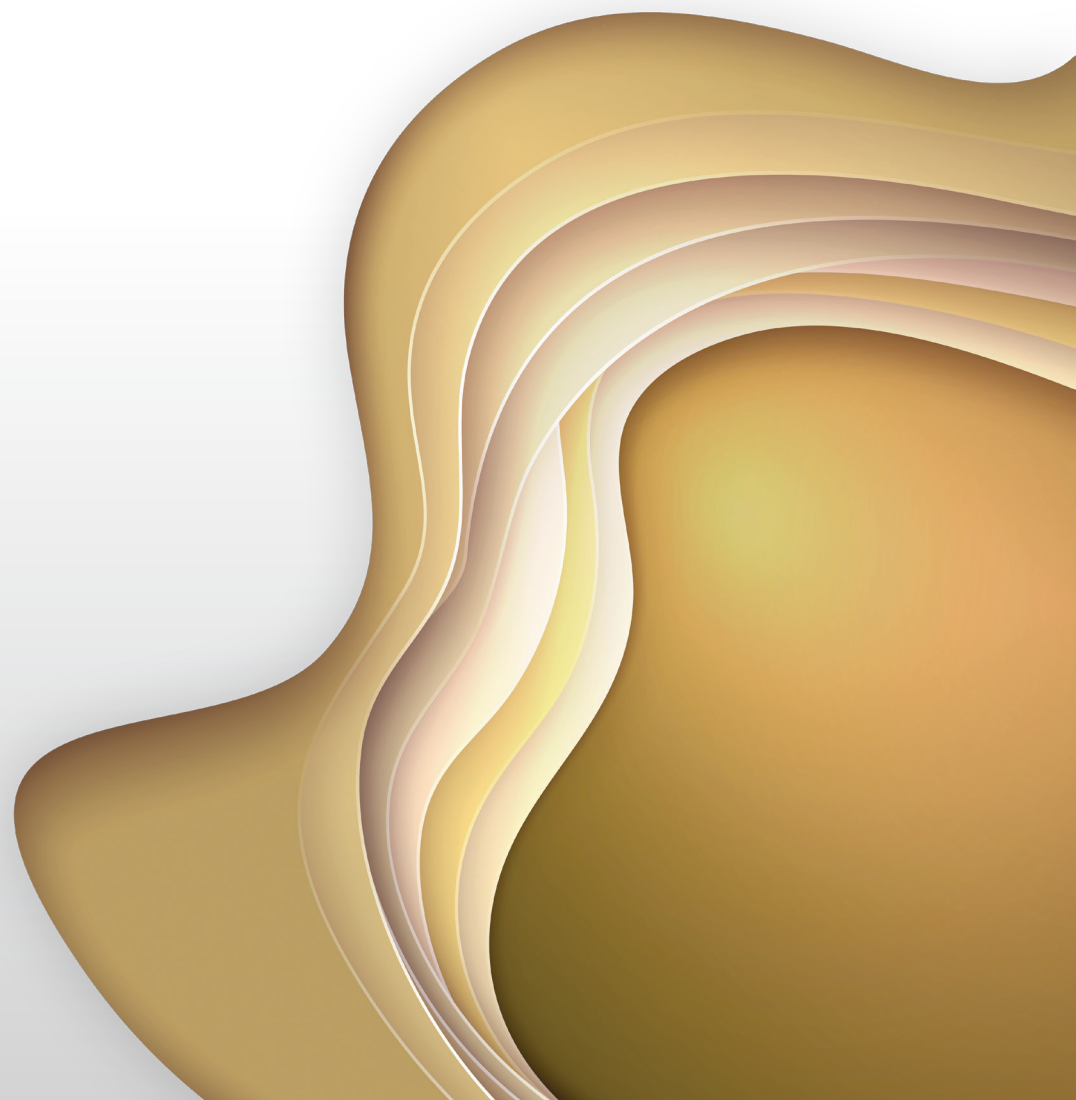
### Palette segment

Content: 12 boxes / 144 bottles  
Height: 245mm (EUR Palette 1200mm x 800mm)  
Weight: 83,52 Kg / 184,16 pound



### Full pallet

Content: 5 segments / 60 boxes / 720 bottles  
Height: 1225mm (EUR Palette 1200mm x 800mm)  
Weight: 417,60 Kg / 920,81 pound





## Drift

Clay lube

Drift is a clay lube of the next generation. With no waxes, silicones or lubricants added, Drift provides lubrication to the clay bar on a molecular level. The unique formulation of patented molecules provides exceptional cleaning abilities to the product. Drift is safe to use and does not decompose most clay bars. Due to its composition it can be easily washed away with pure water.

Spray well on surface and use a clay bar to remove contamination. Wash away with water. Do not leave to dry on surface!



Find out more about this product by following the hyperlink in the QR code or visit [www.aensocarcare.com/product-primeuse.html](http://www.aensocarcare.com/product-primeuse.html)





## Technical information

Available volumes: 500ml / 16,90 US fluid ounce  
5000ml / 169,07 US fluid ounce

EAN Code: 8585053600138  
Product code: 00138  
Packaging material: HDPE

## Logistics information



### Box

Content: 12 bottles  
Dimensions: 262mm x 195mm x 245mm  
Weight: 7,04 Kg / 15.52 pound per box



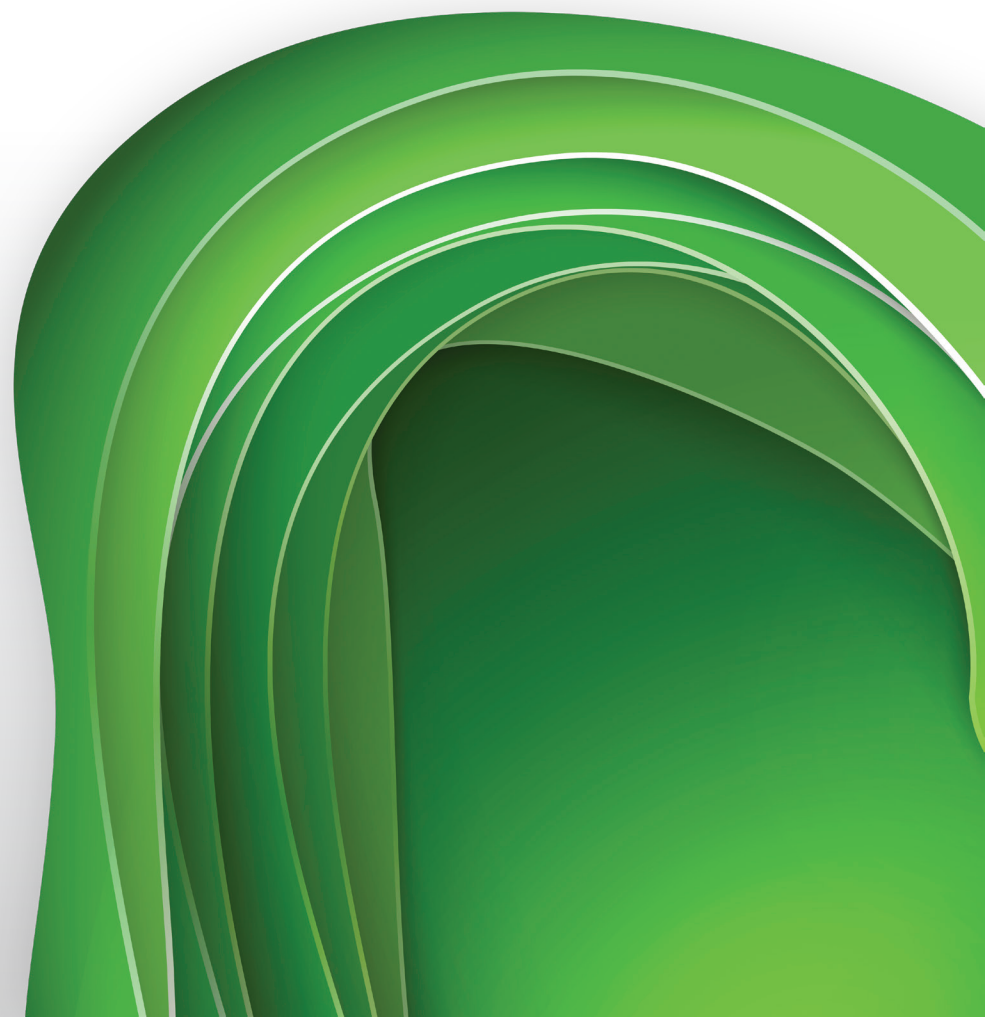
### Pallette segment

Content: 12 boxes / 144 bottles  
Height: 245mm (EUR Palette 1200mm x 800mm)  
Weight: 84,48 Kg / 186,28 pound



### Full pallette

Content: 5 segments / 60 boxes / 720 bottles  
Height: 1225mm (EUR Palette 1200mm x 800mm)  
Weight: 422,40 Kg / 931,39 pound





## Float

### Hydrophilic shampoo

Float is a highly concentrated shampoo with exceptional cleaning abilities and foam stability. It introduces a hydrophilic polymer film to the surface, that helps drying the car effortlessly without water marks, while enhancing the gloss and smoothness of the surface. The hydrophilic sheeting effect will last up to several weeks.

Add 3-4ml of shampoo per liter of water in a washing bucket and foam up with hose or pressure washer. Add more product for better cleaning power or longer lasting sheeting effect. Wash the vehicle with a wash mitt using the two bucket method. Do not leave to dry on the surface! Wash away with pressure washer.



Find out more about this product by following the hyperlink in the QR code or visit [www.aensocarcare.com/product-primeuse.html](http://www.aensocarcare.com/product-primeuse.html)



## Technical information

Available volumes: 500ml / 16,90 US fluid ounce  
5000ml / 169,07 US fluid ounce

EAN Code: 8585053600046  
Product code: 00046  
Packaging material: HDPE

## Logistics information



### Box

Content: 12 bottles  
Dimensions: 262mm x 195mm x 245mm  
Weight: 7,18 Kg / 15.83 pound per box



### Palette segment

Content: 12 boxes / 144 bottles  
Height: 245mm (EUR Palette 1200mm x 800mm)  
Weight: 86,16 Kg / 189,98 pound



### Full pallet

Content: 5 segments / 60 boxes / 720 bottles  
Height: 1225mm (EUR Palette 1200mm x 800mm)  
Weight: 430,80 Kg / 949,91 pound





## Gleam

### Quick detailer

Gleam is a unique quick detailer, that combines ease of use with outstanding performance. It adds protection and gloss to the surface, enhances color and makes it appallingly smooth to touch. On paint, Gleam will also remove fine scratches. It's smear free finish will last for 8 and more weeks, depending on washing frequency and usage of the vehicle. Gleam can be applied to paint, glass and exterior plastics.

Spray on the surface and wipe with a new, good quality microfiber towel until shiny and smear free. Do not leave to dry on surface!



Find out more about this product by following the hyperlink in the QR code or visit [www.aensocarcare.com/product-primeuse.html](http://www.aensocarcare.com/product-primeuse.html)



## Technical information

Available volumes: 500ml / 16,90 US fluid ounce  
5000ml / 169,07 US fluid ounce

EAN Code: 8585053600145  
Product code: 00145  
Packaging material: HDPE

## Logistics information



### Box

Content: 12 bottles  
Dimensions: 262mm x 195mm x 245mm  
Weight: 6,98Kg / 15,39 pound per box



### Palette segment

Content: 12 boxes / 144 bottles  
Height: 245mm (EUR Palette 1200mm x 800mm)  
Weight: 83,76 Kg / 184,69 pound



### Full pallet

Content: 5 segments / 60 boxes / 720 bottles  
Height: 1225mm (EUR Palette 1200mm x 800mm)  
Weight: 418,80 Kg / 923,45 pound



## Isern

Wheel cleaner

Isern is a highly concentrated wheel cleaner that cleans and turns iron deposits purple. It will safely remove brake dust and road grime from wheels, brake calipers and other surfaces, without removing waxes, coatings or sealants applied to them. Isern leaves a clean, degreased and smear free surface behind. It is safe for bare metal wheels.

Spray on surface and leave to react. If needed, agitate with a soft brush. Wash away with a pressure washer. Do not leave to dry on surface! Do not apply on tires!



Find out more about this product by following the hyperlink in the QR code or visit [www.aensocarcare.com/product-primeuse.html](http://www.aensocarcare.com/product-primeuse.html)





## Technical information

Available volumes: 500ml / 16,90 US fluid ounce  
5000ml / 169,07 US fluid ounce

EAN Code: 8585053600084  
Product code: 00084  
Packaging material: HDPE

## Logistics information



### Box

Content: 12 bottles  
Dimensions: 262mm x 195mm x 245mm  
Weight: 7,66 Kg / 16,89 pound per box



### Pallette segment

Content: 12 boxes / 144 bottles  
Height: 245mm (EUR Palette 1200mm x 800mm)  
Weight: 91,92 Kg / 202,68 pound



### Full pallette

Content: 5 segments / 60 boxes / 720 bottles  
Height: 1225mm (EUR Palette 1200mm x 800mm)  
Weight: 459,60 Kg / 1013,42 pound



## One

### Pure shampoo

One is a pure shampoo without any silicones or waxes added. Unique in its formulation it is specially designed for the maintenance of high quality ceramic coatings. The outstanding cleaning power of One will remove dirt, grime, soil, insects and degrease the surface of the vehicle, thus cleaning and maintaining the ceramic coating applied on it.

Add 3-4ml of shampoo per liter of water in a washing bucket and foam up with hose or pressure washer. Add more product for better cleaning power or more foam. Wash the vehicle with a wash mitt using the two bucket method. Do not leave to dry on the surface! Wash away with pressure washer.



Find out more about this product by following the hyperlink in the QR code or visit [www.aensocarcare.com/product-primeuse.html](http://www.aensocarcare.com/product-primeuse.html)





## Technical information

Available volumes: 500ml / 16,90 US fluid ounce  
5000ml / 169,07 US fluid ounce

EAN Code: 8585053600053  
Product code: 00053  
Packaging material: HDPE

## Logistics information



### Box

Content: 12 bottles  
Dimensions: 262mm x 195mm x 245mm  
Weight: 7,18 Kg / 15.83 pound per box



### Palette segment

Content: 12 boxes / 144 bottles  
Height: 245mm (EUR Palette 1200mm x 800mm)  
Weight: 86,16 Kg / 189,98 pound



### Full pallet

Content: 5 segments / 60 boxes / 720 bottles  
Height: 1225mm (EUR Palette 1200mm x 800mm)  
Weight: 430,80 Kg / 949,91 pound



## Orb

### Hydrophobic shampoo

Orb is a shampoo that will add hydrophobic behavior to the cleaned surfaces - paint, exterior plastics, glass and others. With its outstanding cleaning abilities and foam stability, it sets new benchmarks for protection providing shampoos. It leaves behind a finish hydrophobic beading effect will last up to several weeks.

Add 3-4ml of shampoo per liter of water in a washing bucket and foam up with hose or pressure washer. Add more product for better cleaning power or longer lasting sheeting effect. Wash the vehicle with a wash mitt using the two bucket method. Do not leave to dry on the surface! Wash away with pressure washer.



Find out more about this product by following the hyperlink in the QR code or visit [www.aensocarcare.com/product-primeuse.html](http://www.aensocarcare.com/product-primeuse.html)



## Technical information

Available volumes: 500ml / 16,90 US fluid ounce  
5000ml / 169,07 US fluid ounce

EAN Code: 8585053600077  
Product code: 00077  
Packaging material: HDPE

## Logistics information



### Box

Content: 12 bottles  
Dimensions: 262mm x 195mm x 245mm  
Weight: 7,18 Kg / 15.83 pound per box



### Palette segment

Content: 12 boxes / 144 bottles  
Height: 245mm (EUR Palette 1200mm x 800mm)  
Weight: 86,16 Kg / 189,98 pound



### Full pallet

Content: 5 segments / 60 boxes / 720 bottles  
Height: 1225mm (EUR Palette 1200mm x 800mm)  
Weight: 430,80 Kg / 949,91 pound



## Orbit

### Tire dressing

Orbit is a tire dressing that give a satin, natural finish on the tire of the vehicle. It's non-greasy formulation will make the product absorb into the surface quickly, thus eliminating product fly-off while driving after application. Orbit is water based and can therefore be applied on wet tires without creating maps (you should still dry the tire as much as you can). It will not make the tire slippery.

Apply to the surface of the tire and spread out evenly. Let sit until absorbed. Excess can be wiped off with a microfiber towel.



Find out more about this product by following the hyperlink in the QR code or visit [www.aensocarcare.com/product-primeuse.html](http://www.aensocarcare.com/product-primeuse.html)



## Technical information

Available volumes: 500ml / 16,90 US fluid ounce  
5000ml / 169,07 US fluid ounce

EAN Code: 8585053600107  
Product code: 00107  
Packaging material: HDPE

## Logistics information



### Box

Content: 12 bottles  
Dimensions: 262mm x 195mm x 245mm  
Weight: 7,42 Kg / 16,36 pound per box



### Palette segment

Content: 12 boxes / 144 bottles  
Height: 245mm (EUR Palette 1200mm x 800mm)  
Weight: 89,04 Kg / 196,33 pound



### Full pallet

Content: 5 segments / 60 boxes / 720 bottles  
Height: 1225mm (EUR Palette 1200mm x 800mm)  
Weight: 445,20 Kg / 981,67 pound



## Polaris

### Snow foam

Polaris is a universal snow foam, capable of softening dirt and other contamination on the surfaces of motor vehicles. Depending on dosage, it can be gentle enough for regular maintenance of vehicles protected with waxes, yet powerful enough to strip heavy contamination off the car at higher concentration.

Add 1ml of Polaris to 10ml of water in a foam lance and mix well until dissolved. Spray foam on car and leave to react. Wash away with pressure washer. Do not leave to dry on surface!



Find out more about this product by following the hyperlink in the QR code or visit [www.aensocarcare.com/product-primeuse.html](http://www.aensocarcare.com/product-primeuse.html)





## Technical information

Available volumes: 500ml / 16,90 US fluid ounce  
5000ml / 169,07 US fluid ounce

EAN Code: 8585053600060  
Product code: 00060  
Packaging material: HDPE

## Logistics information



### Box

Content: 12 bottles  
Dimensions: 262mm x 195mm x 245mm  
Weight: 7,40 Kg / 16,32 pound



### Palette segment

Content: 12 boxes / 144 bottles  
Height: 245mm (EUR Palette 1200mm x 800mm)  
Weight: 88,80 Kg / 195,80 pound



### Full palette

Content: 5 segments / 60 boxes / 720 bottles  
Height: 1225mm (EUR Palette 1200mm x 800mm)  
Weight: 444,00 Kg / 979,02 pound



## Pureview

Glass cleaner

Pureview cleans exterior and interior glass of motor vehicles without leaving any smears behind. Unlike other products, Pureview is strong enough to remove nicotine and tar films in smoker's cars as well as bugs, traffic film and grime with a crystal clear finish.

Spray on glass and wipe away with a clean microfiber towel in straight lines. If required, wipe smear free with another microfiber towel.



Find out more about this product by following the hyperlink in the QR code or visit [www.aensocarcare.com/product-primeuse.html](http://www.aensocarcare.com/product-primeuse.html)





## Technical information

Available volumes: 500ml / 16,90 US fluid ounce  
5000ml / 169,07 US fluid ounce

EAN Code: 8585053600121  
Product code: 00121  
Packaging material: HDPE

## Logistics information



### Box

Content: 12 bottles  
Dimensions: 262mm x 195mm x 245mm  
Weight: 7,00 Kg / 15.44 pound per box



### Palette segment

Content: 12 boxes / 144 bottles  
Height: 245mm (EUR Palette 1200mm x 800mm)  
Weight: 84,00 Kg / 185,22 pound



### Full pallet

Content: 5 segments / 60 boxes / 720 bottles  
Height: 1225mm (EUR Palette 1200mm x 800mm)  
Weight: 420,00 Kg / 926,10 pound



## Revolve

Tire cleaner

Revolve is a specially formulated tire cleaner, able to clean dirt and grime, as well as stubborn contamination including tire dressings and wax based markers off the surface of the wheels. It leaves a flawless, satin and clean finish, ready for the application of tire dressings.

The product separates at room temperature. Shake well before usage. Spray on tire surface and agitate with a soft brush. A rigid brush may be used if more thorough cleaning is required. Work in sections. Wash away with pressure washer. Do not leave to dry on surface!



Find out more about this product by following the hyperlink in the QR code or visit [www.aensocarcare.com/product-primeuse.html](http://www.aensocarcare.com/product-primeuse.html)



## Technical information

Available volumes: 500ml / 16,90 US fluid ounce  
5000ml / 169,07 US fluid ounce

EAN Code: 8585053600091  
Product code: 00091  
Packaging material: HDPE

## Logistics information



### Box

Content: 12 bottles  
Dimensions: 262mm x 195mm x 245mm  
Weight: 7,10 Kg / 15.66 pound per box



### Palette segment

Content: 12 boxes / 144 bottles  
Height: 245mm (EUR Palette 1200mm x 800mm)  
Weight: 85,20 Kg / 187,87 pound



### Full pallet

Content: 5 segments / 60 boxes / 720 bottles  
Height: 1225mm (EUR Palette 1200mm x 800mm)  
Weight: 426,00 Kg / 939,33 pound



## PASSION

### ENERGY DRINK

Passion is currently the only non-detailing product of the Aensō line. It is a carbonated, high caffeine content energy drink, made especially for Aensō. Passion is not a re-label of a classic energy drinks and exhibits a different taste to most other brands, offering a recognizable experience, that customers can identify with the Aensō product line.

With its high content of caffeine, vitamins B3, B5, B6, B12 and plant extracts including guarana, green tea, schisandra, damiana and others, Passion boosts energy levels, required at times of intense physical and mental activity - for example detailing vehicles.

It comes in a common 250ml aluminum drink can with a high quality 3 dimensional direct to surface print with partially UV lacquered Aensō logotypes on the background.

The Aensō Passion energy drink is available for separate sales at events, gas stations, food stores, detailing shops and other outlets.



Find out more about this product by following the hyperlink in the QR code or visit [www.aensoenergy.com](http://www.aensoenergy.com)



## Technical information

Available volumes: 250ml / 8,45 US fluid ounce

EAN Code: 8585053600244

Product code: 00244

Packaging material: Aluminium can

## Logistics information



### Can

Content: 1 can (250ml)

Dimensions:

Weight: 2,26 Kg / 0.57 pound



### Tray

Content: 24 cans (250ml)

Height:

Weight: 6,66 Kg / 14,68 pound



### Palette

Content: 10 segments / 120 trays / 2880 cans

Height:

Weight: 799,2 Kg / 1761,93 pound

